

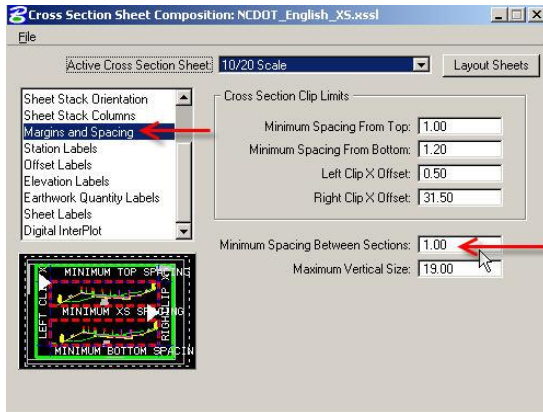
12_05 Avoiding Overlapping Text Elevation Labels

Question:

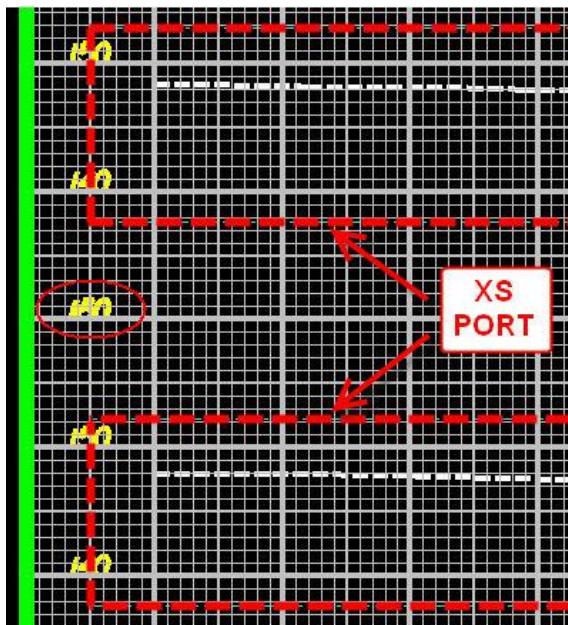
I have a project that has almost 250 XPL sheets just for the mainline. It is time consuming to go to each sheet and delete the elevation text labels each time they overlap. Is there anything we can change or add to avoid elevations on top of one another?

Answer:

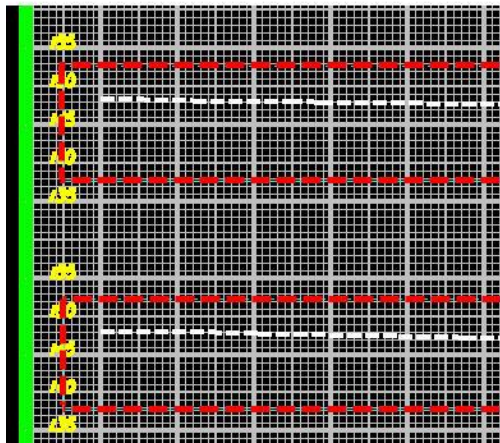
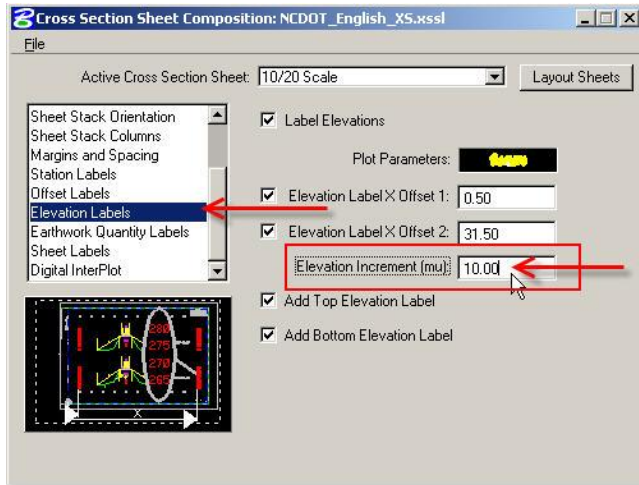
Our standard NCDOT XSSL configuration already has the minimum spacing between sections set to 1". DO NOT CHANGE THIS SETTING. Increasing this distance may actually increase the number of total XPL sheets generated by the XS Sheet Composition program because fewer sections can be placed per sheet.



Understanding the default behavior of elevation labels is crucial to determine the resolution for your circumstance. Each section has a rectangular clip boundary or XS port, as shown with a dashed red line in the above picture. An elevation label will be placed at the next major or medium grid line outside the XS port. In the below picture, elevation label "160" [ft] from the previous section overlaps with elevation label "130" [ft] of the next section.



A better solution to avoid overlapping elevation text, **and as an option**, is to change the default "Elevation Increment" setting from 10 to 5 under Elevation Labels.



Note by labeling elevations in increments of 5' instead of 10' not only avoided overlapping text, but also improved the overall appearance of the XPL sheet by distinctly separating each section with a major or medium horizontal grid line. In addition, no extra sheets were generated during the process.

